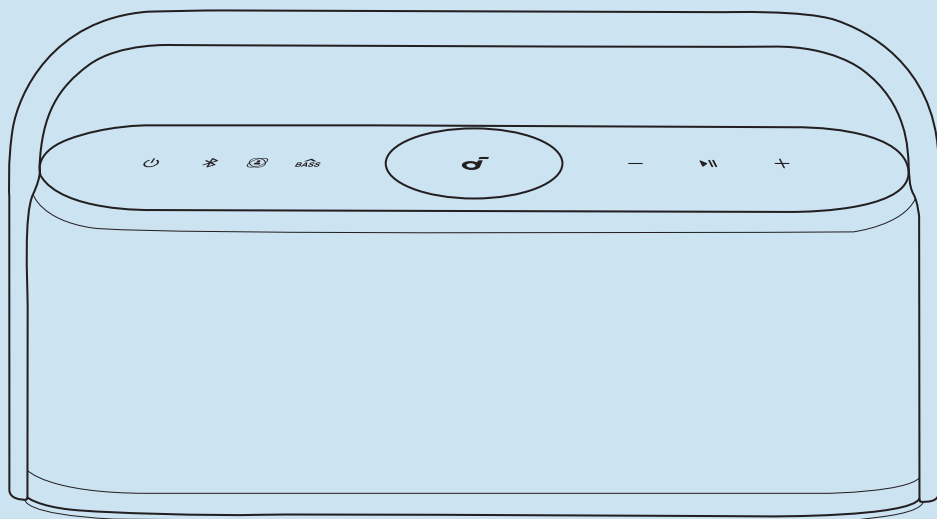


soundcore

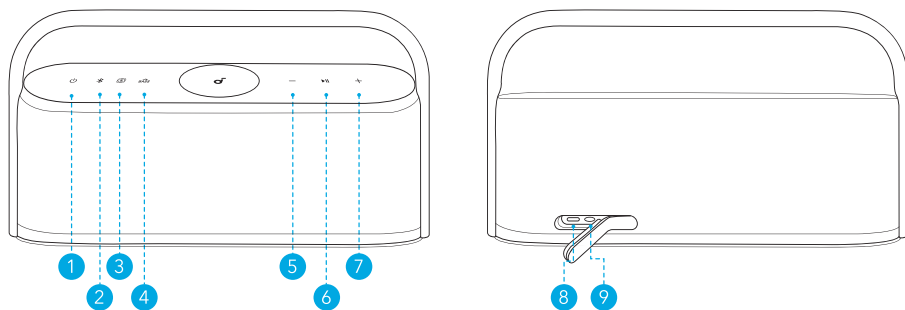


soundcore Motion X600

USER MANUAL

English	01	Portugues do Brasil	111
Čeština	11	Русский	121
Dansk	21	Svenska	131
Deutsch	31	Türk	141
Español	41	日本語	151
Suomi	51	한국어	161
Français	61	简体中文	171
Italiano	71	繁體中文	181
Nederlands	81	لَعَرَبِيَّة	191
Norsk	91	עברית	201
Język polski	101		

At a Glance

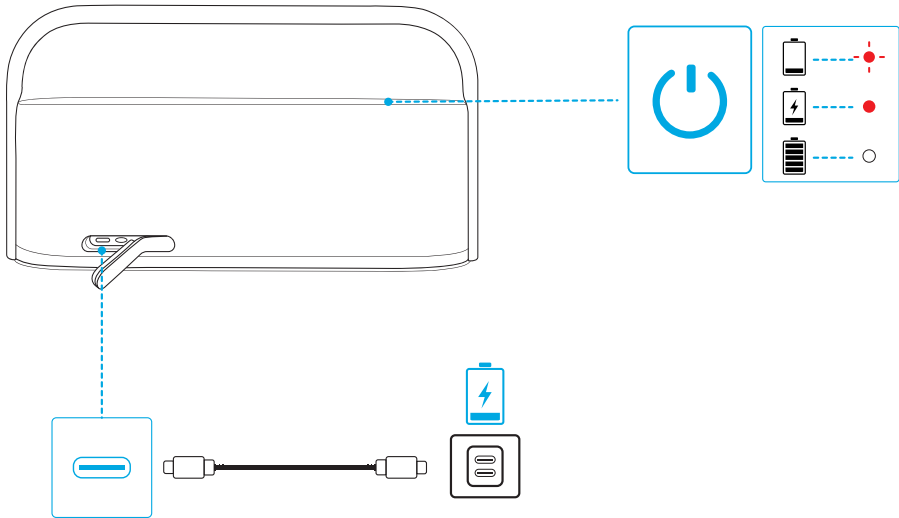





1. Power
2. Bluetooth
3. Spatial Sound
4. BassUp
5. Volume Down
6. Play / Pause
7. Volume Up
8. USB-C Charging Input
9. AUX IN

Charging

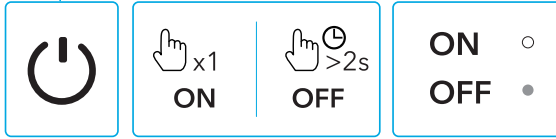
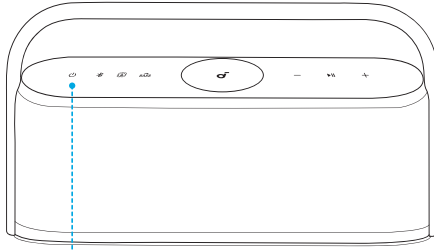
Use a certified USB-C cable and charger to prevent any damage.

Fully charge this speaker before the first use to prolong the lifespan of the built-in battery.



	Flashing red	Low battery
	Steady red	Charging
	Steady white	Fully charged

Powering On / Off



	Press once	Power on
	Steady white	
	Press and hold for at least 2 seconds	Power off
	Light off	

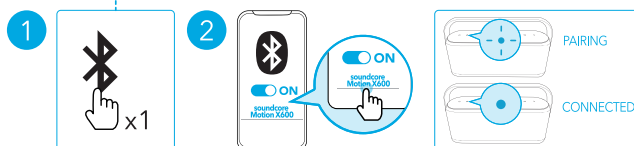
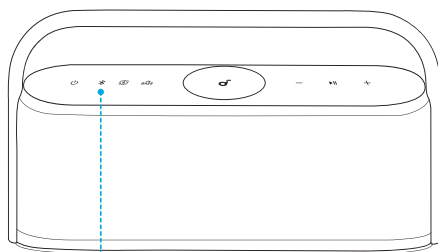


This speaker will power off automatically after 20 minutes if no device is connected.

Using Your Speaker

Bluetooth Mode

With this speaker, you can enjoy music through your Bluetooth-enabled devices.



	Press once	Enter Bluetooth pairing mode
	Flashing blue	Bluetooth pairing
	Steady blue	Bluetooth connected

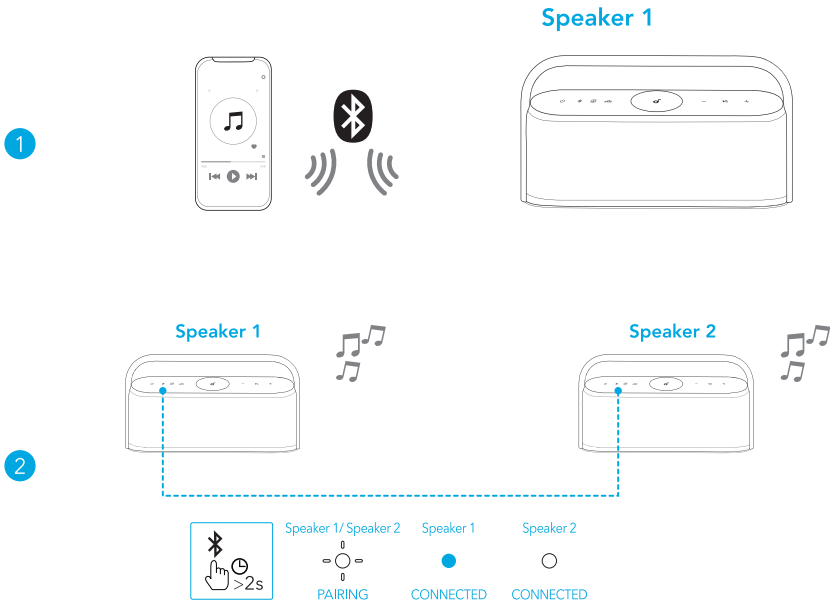


- To re-enter Bluetooth pairing mode, press the Bluetooth button once.
- This speaker can only play music on one mobile device at a time. To play from another connected device, pause the device that's currently active first.
- Each time you power on your speaker, it will automatically connect to your last connected device if available within the Bluetooth range. If not, press the Bluetooth button to enter Bluetooth pairing mode.

TWS (True Wireless Stereo) Mode

Two identical Motion X600 speakers can pair with each other for stereo sound. Both speakers can play the same audio (one as the left channel and the other as the right channel).

1. Connect either speaker with your Bluetooth device.
2. On both speakers, press and hold the Bluetooth button for at least 2 seconds to enter TWS pairing mode.



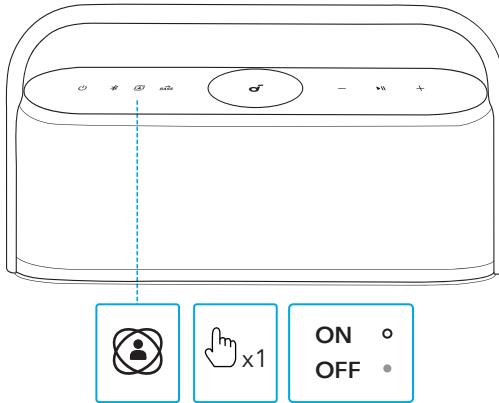
	Press and hold for at least 2 seconds	Enter TWS pairing mode
	Flashing white	TWS pairing
	Steady blue (Speaker 1)	TWS connected
	Steady white (Speaker 2)	



To exit TWS mode, press and hold the Bluetooth button for at least 2 seconds.

Spatial Sound

Spatial sound places sound all around you to create an immersive listening experience.

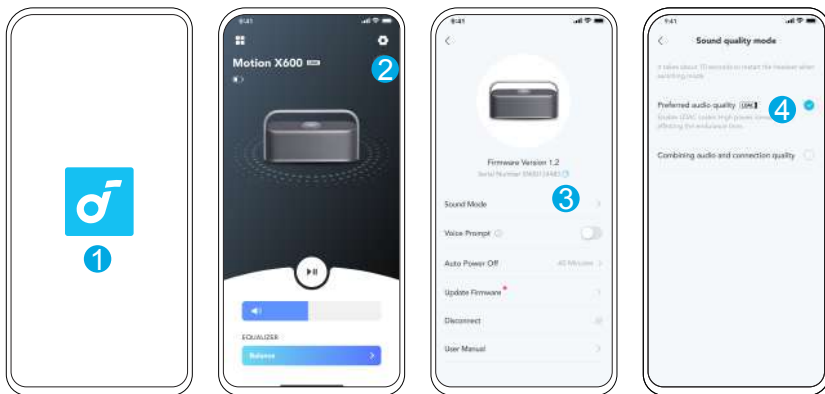


	Press once	Turn spatial sound on / off
	Steady white	Spatial sound on
	Light off	Spatial sound off

LDAC

Use devices powered by Android 8.0 or later to experience LDAC quality sound.

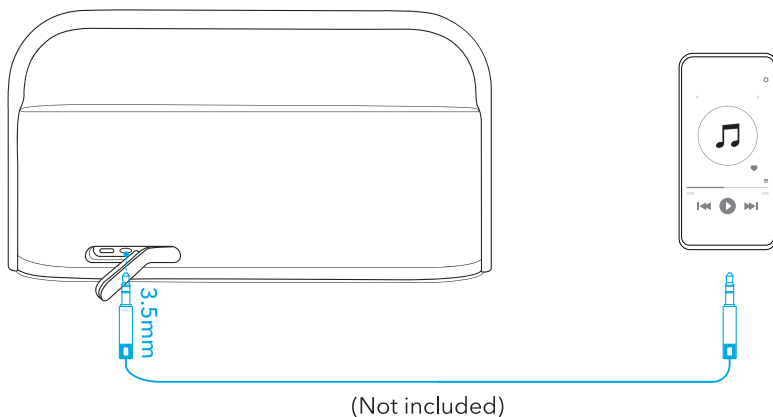
1. Open the soundcore app.
2. Go to the Settings icon on the home page.
3. Click on "Sound Mode."
4. Select "Preferred audio quality" to switch to LDAC codec.



- It takes about 10 seconds to switch audio codecs. You may be requested to update the speaker's firmware if available.
- LDAC provides higher quality sound, increases power consumption, and reduces playtime.
- Enable LDAC in a low-interference environment to ensure a stable Bluetooth connection.





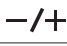

AUX Mode

Insert a 3.5mm AUX cable (not included) to play audio on an external device.



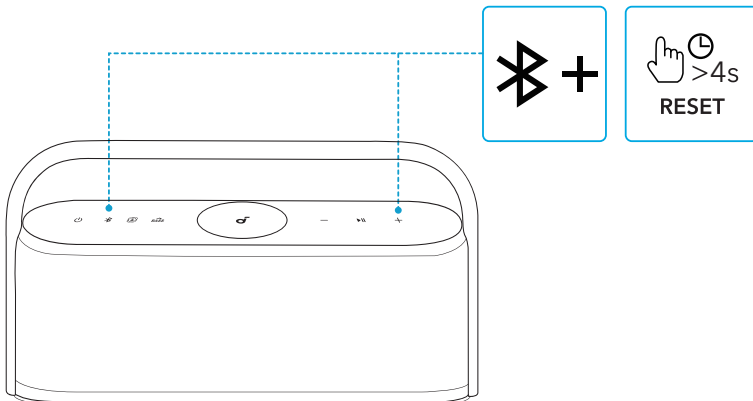
When using AUX mode, control audio playback via the connected device.

Button Controls

	Press once	Power on
	Press and hold for at least 2 seconds	Power off
	Press once	Enter Bluetooth pairing mode
	Press and hold for at least 2 seconds	Enter / exit TWS pairing mode
	Press once	Turn spatial sound on / off
	Press once	Turn BassUp on / off
	Press	Volume up / down
	Press once	Play / pause
	Press twice	Next track
	Press three times	Previous track
	Press once	Answer / end a call
	Press and hold for at least 2 seconds	Reject a call
	Press and hold for at least 2 seconds	Activate voice assistant software

Reset

Press and hold the Bluetooth button and volume up button simultaneously for at least 4 seconds to reset the speaker.



App

Download the soundcore app to enhance your experience.

Product information: Check the product name and software version, or read the user manual.

Firmware update: You will be informed once a new version of firmware is detected when you connect the speaker with the app.

Battery status: Indicates the remaining battery level of your speaker.

Volume control: Adjust the volume level via the app without pressing the buttons on the speaker.

EQ settings: There are 6 EQ settings you can choose from in the app to optimize your experience while enjoying different music genres.

- **soundcore Signature:** Standard EQ mode optimized for well-balanced sound.
- **Voice:** Voices stand out more clearly from other ambient sounds.
- **Treble Boost:** High frequencies are enhanced.
- **Balance:** No enhancement for high-frequency and low-frequency sounds.
- **Custom:** Customize the EQ setting to suit you in the app.
- **BassUp:** Turn on BassUp to enhance the low-frequency sound.

Set auto-power off time: Set an auto-power off time (5 / 10 / 20 / 60 minutes, 20 minutes by default). The speaker will automatically power off when the time is up.

Voice prompt: Mute or restore the voice prompt while powering on / off.



Google Play and the Google Play logo are trademarks of Google Inc.



Apple and the Apple logo are trademarks of Apple Inc.



Specifications

Specifications are subject to change without notice.

DC power input	5V --- 3A
Battery capacity	6400mAh / 7.2V
Audio output power	50W
Charging time	6 hours
Playtime (varies by volume level and music content)	12 hours
Waterproof level	IPX7
Bluetooth version	5.3
Bluetooth range	100m / 328ft